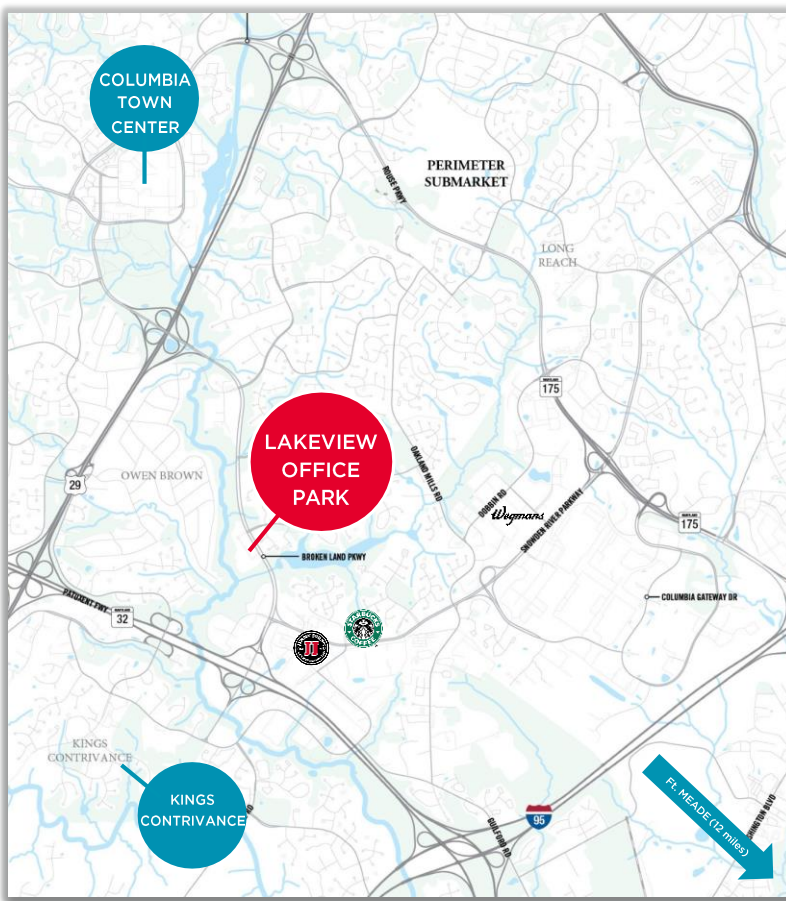


LAKEVIEW OFFICE PARK



9861 Broken Land Parkway, Columbia, MD



Highlights

- One mile from Columbia Town Center
- Walking/biking trail access Lake Elkhorn
- Shared conference facility
- Above market parking ratio
- Deli and shower/locker room in project
- Four-story office building, conveniently located near I-95, Route 29, & Route 32
- Campus-like setting

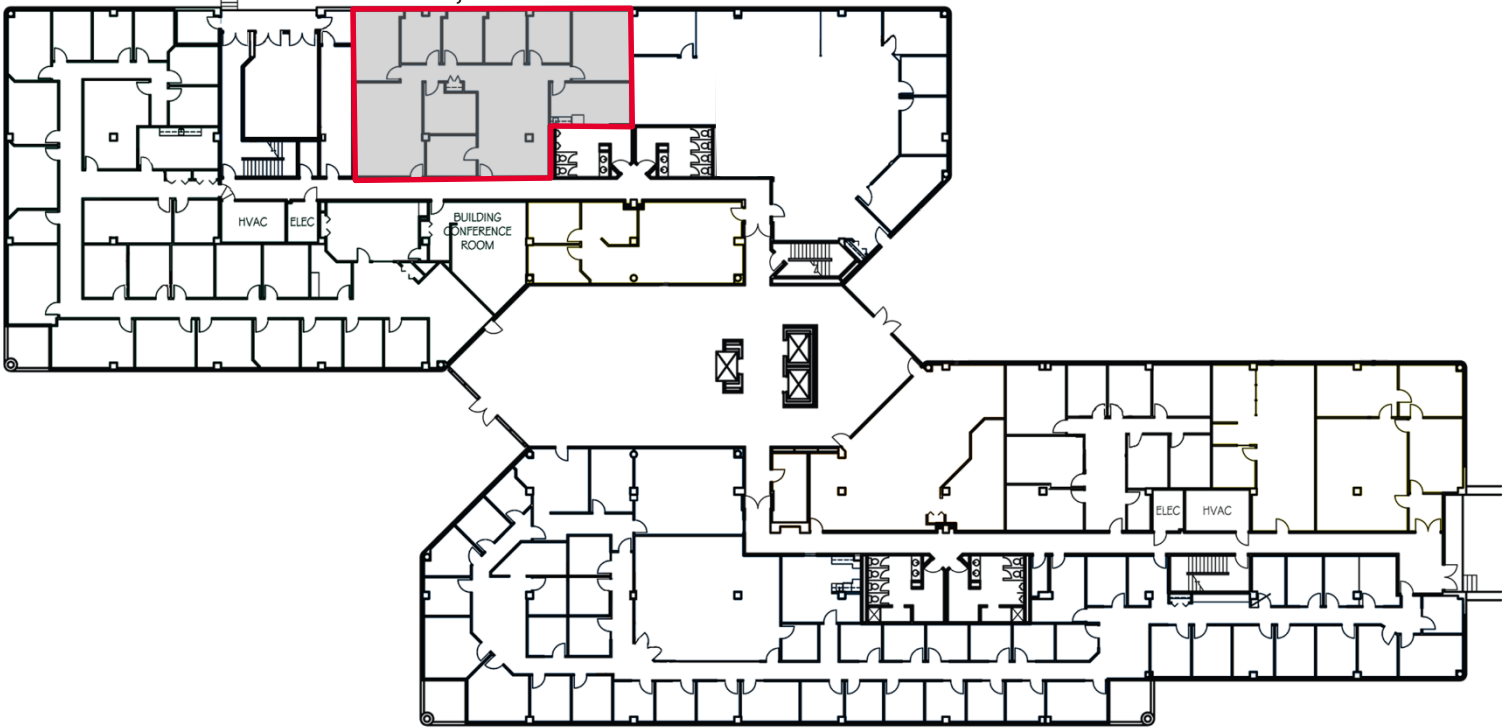
Andrew Smith
Senior Director
+1 410 953 6691
andrew.j.smith@cushwake.com

Scott Matthews
Senior Associate
+1 410 953 6697
scott.matthews@cushwake.com



FIRST FLOOR - 2,817 SQ FT AVAILABLE

Suite 105
2,817 SF



SECOND FLOOR - 6,119 SQ FT AVAILABLE

Suite 202
6,119 SF

