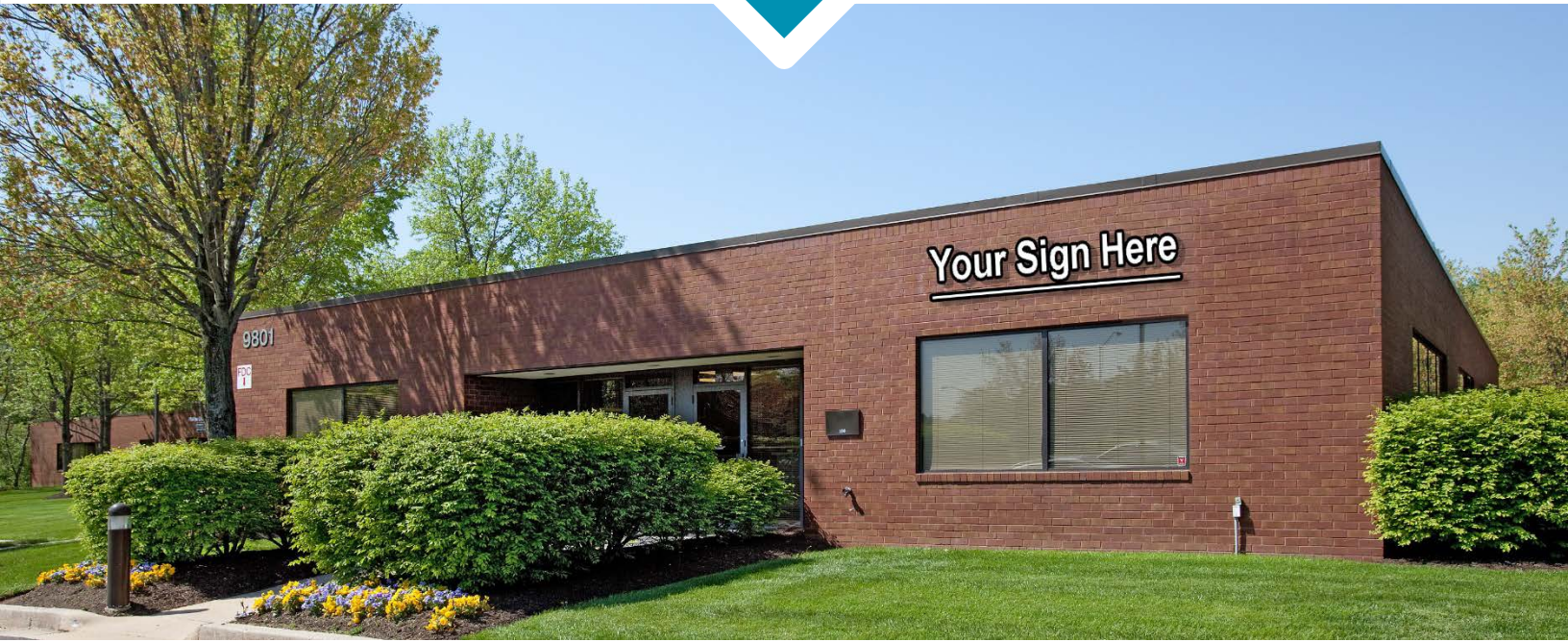
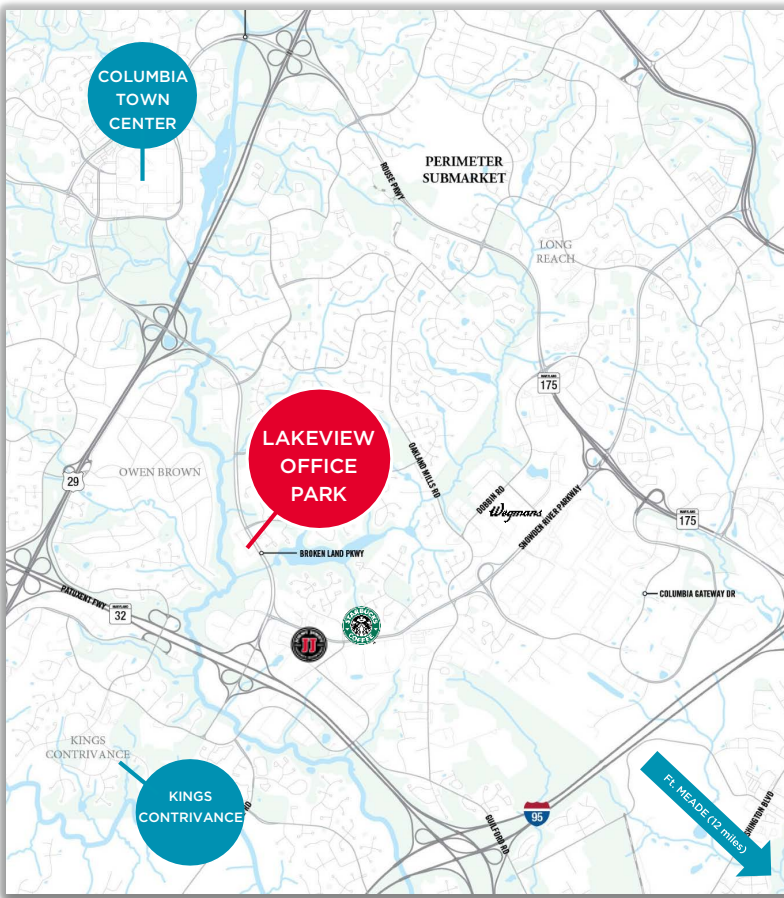


# LAKEVIEW OFFICE PARK



## 9801 Broken Land Parkway, Columbia, MD



### Highlights

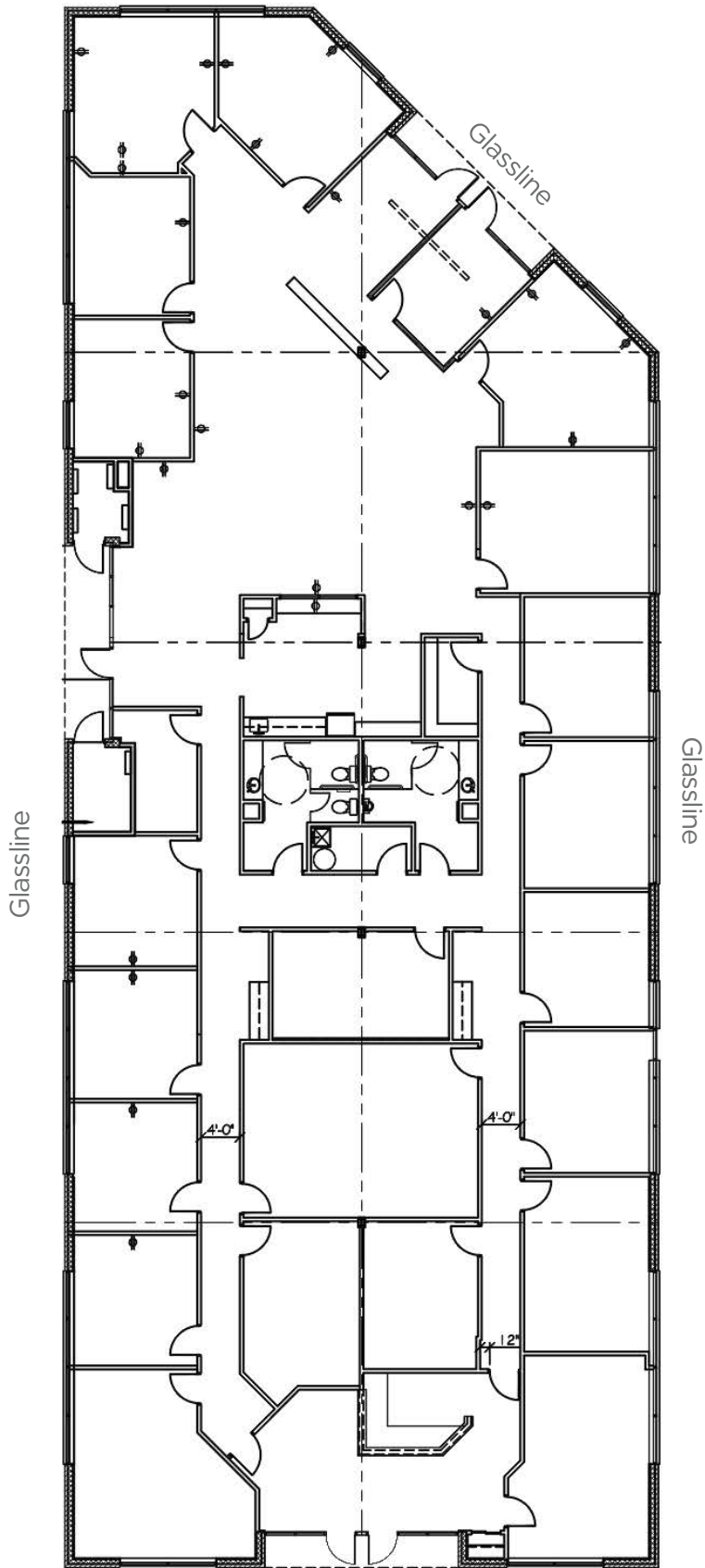
- 100% office space
- Building signage available fronting Broken Land Parkway
- One mile from Columbia Town Center
- Wrapped in glass-line
- Freestanding building
- Walking/biking trail access Lake Elkhorn
- Above market parking ratio
- Deli and shower/locker room in project
- Conveniently located near I-95, Route 29, & Route 32
- Campus-like setting

**Andrew Smith**  
Director  
+1 410 953 6691  
andrew.j.smith@cushwake.com

**Scott Matthews**  
Senior Associate  
+1 410 953 6697  
scott.matthews@cushwake.com



9,317 SQ FT AVAILABLE



Entrance from Broken Land Parkway

**FLOOR PLAN**